



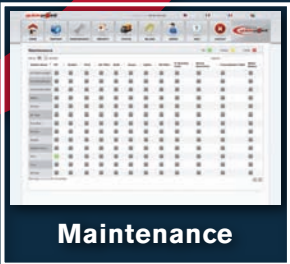
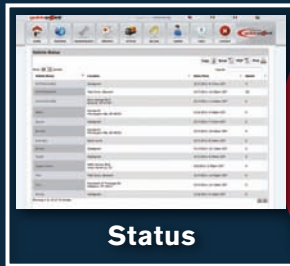
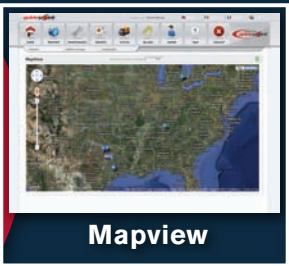
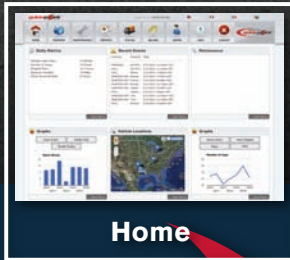
NISSAN FLEET TRACKER



NISSAN FLEET TRACKER



NISSAN FLEET TRACKER



NISSAN FLEET TRACKER

The Nissan Fleet Tracker powered by Guidepoint is the gold-standard in stolen vehicle tracking and recovery. It's packed with all of the critical features that ensure you'll get your vehicle back as fast as possible once you notice it's been stolen, plus additional benefits for your safety on the road.



BASIC FEATURES

	BASIC
Complete Nationwide Coverage	x
24/7/365 Call Center Support	x
Stolen Vehicle Tracking*	x
Burglar Alarm Detection / Notification	x

* All Nissan Fleet Tracker Systems require a constant 12-volt power source as well as cellular and GPS Satellite service to be available and operating for your Nissan Fleet Tracker features to function properly.

OPTIONAL SERVICES PLANS*

The Nissan Fleet Tracker Silver and Gold Plans add the following features to the Basic Plan:

	SILVER	GOLD
Airbag Deployment / Notification	x	x
Maintenance Reporting	x	x
TPMS Lamp Alert	x	x
ABS Lamp Alert	x	x
MIL Lamp Alert	x	x
Emergency Assist Calling (eCall)	x	x
Call Center Assisted Vehicle Locator	x	x
Unlimited Online Vehicle Tracking	x	x
Remote Door Lock / Unlock	x	x
Fleet Dashboard	x	x
Fuel Monitoring		x
Excessive Speed Reporting / Alerts		x
Landmarks (Geofencing)		x
Landmark Arrival & Departure Alerts		x
Stop Reporting		x
History Reporting (2 minute intervals)		x
Unauthorized Usage Reporting		x
Exception Reporting		x
Data Export API		x
Telemetry Report		x
Part Number	999Q8HX111	999Q8HX222

*One-Year Service / Renewable.

LIMITATIONS

Electrical – The Nissan Fleet Tracker System installed in your vehicle relies on the battery of your vehicle and will not operate if the battery is disconnected or discharged. This does not prevent an assistant from providing you some of the services for which you are entitled, but we may rely on your verbal information regarding the location of your vehicle.

Cellular Communication Limitations –While you are in your vehicle, you are relying on cellular technology for communications with the Guidepoint Response Center. Your cell phone provider's coverage may limit your ability to communicate with the Guidepoint Response Center. If you request Guidepoint Response Center assistance outside your cellular communication service area or if your cellular provider's system is busy due to reaching maximum call capacity, the Guidepoint Response Center Personnel may not be able to assist you.

GPS Positioning Capabilities and Limitations –Vehicle location is available by receiving and interpreting signals transmitted by satellites. Your Nissan Fleet Tracker System is designed to receive those satellite transmissions every second and store data in the unit for retrieval, via our wireless network, in real-time. When signals experience obstruction, real-time location capabilities can be impaired or completely lost. Obstructions can occur when your vehicle is driven into areas with tall buildings, tunnels, parking garages or underpasses. In addition, trees and other objects can also affect GPS location capabilities. If we are unable to retrieve real-time location data, we may be able to retrieve recent historic data from the unit and/or we may depend on you to provide verbal information about your location in order to provide services.

GPSi, LLC
25307 Dequindre Road
Madison Heights, MI 48071
Tel: 1-877-477-3693
www.guidepointsystems.com



Nissan FT 4/11 ©2011 Nissan USA



Intelligent, intuitive...



Introducing Nissan Fleet Tracker



An Affordable Fleet Tracker Solution For NV Owners.

Nissan Fleet Tracker offers an affordable solution for Nissan NV owners that want to improve productivity, keep track of their vehicles, reduce costs and ensure the safety of their employees. Designed exclusively for the Nissan NV, the Nissan Fleet Tracker gives you the potential to achieve all this:

Improved Productivity

- Reduce unnecessary trips and unproductive stops.
- Reach job sites more quickly and efficiently.

Improved Asset Protection

- Protect company vehicles and equipment.
- Receive alarm notifications.

Reduced Costs

- Reduce fuel consumption.
- Receive Maintenance Reporting.

Increased Profit

- Complete more jobs every day.
- Use reporting tools to improve billing accuracy.

Improved Employee Safety

- Monitor vehicle speeds.
- 24/7/365 live emergency assistance.

Fleet Tracking Made Easy

Managing an entire fleet of vehicles has never been easier. That's because the Nissan Fleet Tracker uses GPS Technology powered by Guidepoint Systems, a leader in GPS tracking solutions. Thanks to Fleet Tracker's easy-to-use web-based tracking system, fleet owners and managers can get real-time information and up-to-the-minute history reports about any covered fleet vehicle through an intuitive online dashboard.



Maximize Productivity With Feature-Rich Fleet Tracking.

The Nissan Fleet Tracker provides you with everything you need to manage your fleet at peak efficiency. Locate a covered vehicle online and see its exact location on the map. Get its heading and current speed, all with a click of the mouse. View reports detailing all stops a vehicle has made along its route. Plus, get instant, automatic alerts sent via email whenever a vehicle arrives or departs at a preset destination.



Everything You Need To Manage Your Fleet And Keep Track Of Your Employees.

With Nissan Fleet Tracker, you'll gain unprecedented insight into the activities of your entire fleet, making it easier than ever to manage employee schedules, review employee performance and maintain your vehicles.



- ▶ Keep track of your employees online. Find out the location of a fleet vehicle, its travel speed and its heading.



- ▶ Fine-tune your employees job schedules for maximum productivity.



- ▶ Keep an ongoing record of vehicle activity, ideal for staying up-to-date with your vehicle's maintenance and minimizing your maintenance costs.

NISSAN Fleet Tracker...the Ideal Tracking Solution For Your Entire Fleet.

Whether your fleet consists of two vehicles or two hundred, the Nissan Fleet Tracker powered by Guidepoint makes it easier and more affordable than ever to keep track of your fleet. The comprehensive web-based interface lets you access live, GPS location data for every covered vehicle in your fleet, so you can operate your business with extraordinary efficiency.

Point. Click. Track 'em!

Every Tool You Need To Achieve Peak Efficiency.

The Nissan Fleet Tracker features a remarkably simple web-based user interface that gives you key information you want to know about your fleet. From real-time map views for each vehicle, to comprehensive event tracking and maintenance reporting, managing your entire fleet has never been easier.

At-a-glance Insight To Your Entire Fleet:

Get instant, real-time information about your fleet from any computer or mobile device.



Home

The Fleet Tracker **Home Screen** is a dash board that provides a high-level summary about your entire fleet. Daily metrics and recent events give you up-to-date *statistics* about your fleet, while graph views provide details about total hours & distance driven, hours stopped, and so much more.



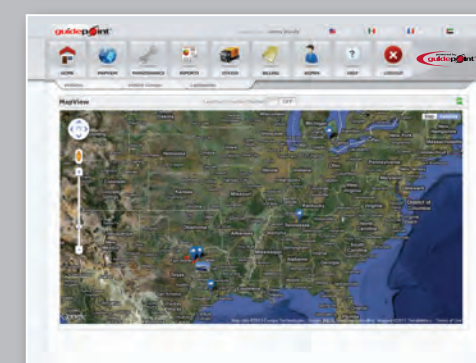
Reports

Need in-depth information about a particular vehicle or driver in your fleet? Fleet Tracker's **Reports** feature lets you easily create customized reports on everything from *travel speed* and *stops made*, to *hours driven*, *hours worked* and more, making it easy to track employee performance and manage payroll.



Map View

The Fleet Tracker provides a live turn-by-turn **Map View** showing the *current location* and *travel direction* for all your covered vehicles. The Map View lets you identify fleet vehicles in a given vicinity, making it perfect for redirecting a vehicle to a high-priority job.

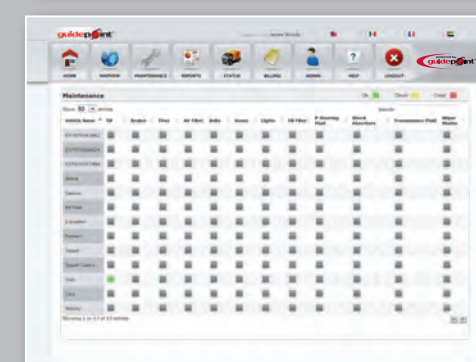


Status

The **Status** page gives you instant details on the whereabouts of your vehicles. View their current *location*, see their current *mileage*, *travel speed* and more.

Maintenance

With the Fleet Tracker's **Maintenance** feature, you can make sure your vehicles stay in top shape at all times. That's because the software automatically monitors each vehicle's *maintenance needs* based on its use. You can easily set maintenance intervals for all major fluids and components and view a color-coded status report that lets you know which vehicles require service.



Admin

Fleet Tracker's **Admin** page gives you the flexibility to customize Fleet Tracker to deliver the information you need about your fleet through instant email alerts. Easily set excessive *speed notification* email alerts to let you know the instant a vehicle is traveling recklessly, set *excessive stop* alerts to prevent downtime, and even set *unauthorized usage* alerts – perfect if you want to prevent your vehicles from being used outside of company hours.

